



MODERATELY HYPOFRACTIONATED SALVAGE RADIOTHERAPY (SRT) FOR A LOCAL RECURRENCE AFTER RADICAL PROSTATECTOMY (RP): ACUTE AND LATE TOXICITY RATES.

*A. Faiella, *M.G. Petrongari, ^V. Landoni, *A. Farneti,
*B. Saracino, °L. Bertini, *G. Sanguineti*

*Radioterapia Oncologica, Istituto Nazionale Tumori Regina Elena, Roma

^Lab. Fisica Medica e Sistemi Esperti, Istituto Nazionale Tumori Regina Elena, Roma

°Radiologia Diagnostica, Istituto Nazionale Tumori Regina Elena, Roma

DICHIARAZIONE

Relatore: Maria Grazia Petrongari



- Come da nuova regolamentazione della Commissione Nazionale per la Formazione Continua del Ministero della Salute, è richiesta la trasparenza delle fonti di finanziamento e dei rapporti con soggetti portatori di interessi commerciali in campo sanitario.
 - Posizione di dipendente in aziende con interessi commerciali in campo sanitario (NIENTE DA DICHIARARE)
 - Consulenza ad aziende con interessi commerciali in campo sanitario (NIENTE DA DICHIARARE)
 - Fondi per la ricerca da aziende con interessi commerciali in campo sanitario (NIENTE DA DICHIARARE)
 - Partecipazione ad Advisory Board (NIENTE DA DICHIARARE)
 - Titolarità di brevetti in compartecipazione ad aziende con interessi commerciali in campo sanitario (NIENTE DA DICHIARARE)
 - Partecipazioni azionarie in aziende con interessi commerciali in campo sanitario (NIENTE DA DICHIARARE)



IRE
ISTITUTO NAZIONALE TUMORI
REGINA ELENA



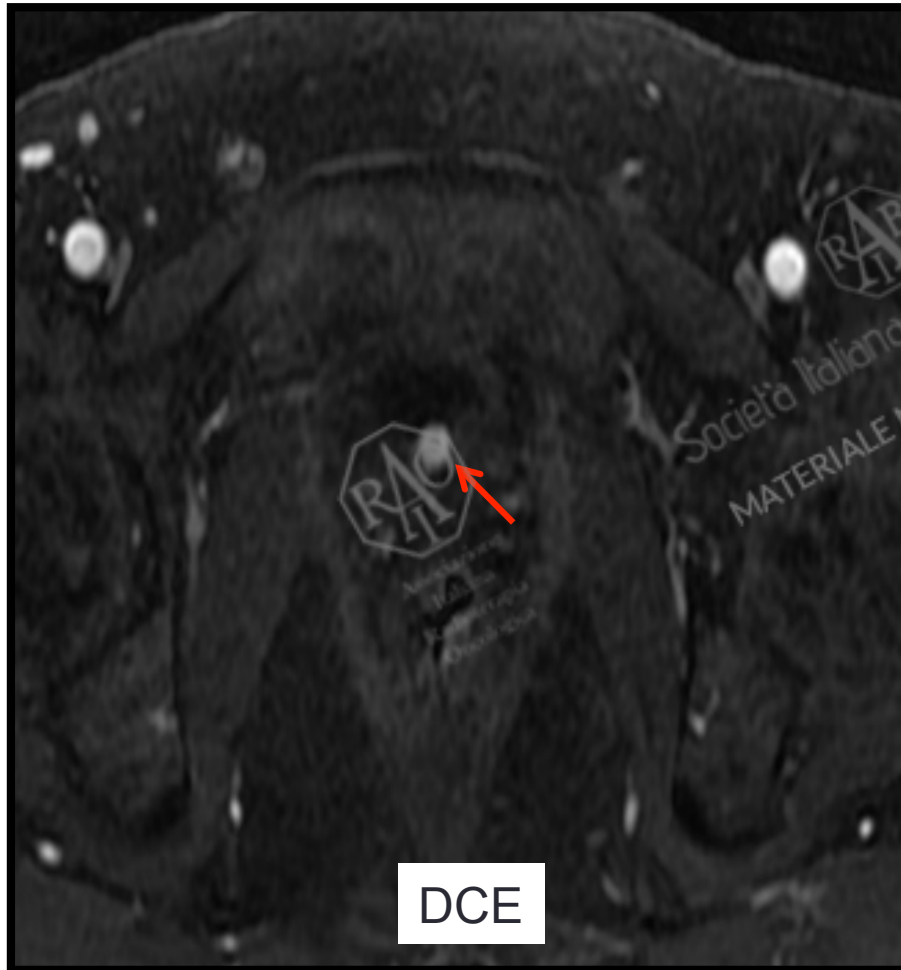
ISTITUTI DI RICOVERO E CURA A CARATTERE SCIENTIFICO

Aims

- The aim of this study was to evaluate both acute and late toxicity rates in patients treated with moderately hypofractionated Salvage Radiotherapy (SRT) in Intensity Modulated Radiation Therapy (IMRT) or Volumetric Modulated Arc Therapy (VMAT) with a Simultaneous Integrated Boost (SIB).
- All patients had both a local recurrence shown by multiparametric magnetic resonance imaging (mpMRI) and a detectable PSA (> 0.20 ng/mL) after radical prostatectomy (RP).

Local recurrence (LR) after Radical Prostatectomy (RP)

Urethral-vesical anastomosis



Intra-vesical LR

Methods

Feb 2014 -Nov
2015

48 consecutive
patients were
treated with SRT.

The patients
characteristics are
shown in table.

Patients characteristics:		
Median PSA pre RT		0.69 ng/ml (0.20-3.57)
Median age		71 yrs (53-83)
Stage pT		(no patients)
	pT2a	2
	pT2b	1
	pT2c	25
	pT3a	12
	pT3b	7
Stage pN		(no patients)
	pNx	19
	pN0	26
	pN1	3
Stage cM	cM0	48
Surgical Margins (SM)		(no patients)
	SM- SM+	22 26
Gleason score		(no patients)
	6(3+3)	4
	7(3+4)	20
	7(4+3)	19
	≥8	5
PSADT		(no patients)
	< 6 mo	15 (31%)
	> 6 mo	33 (69%)

Methods

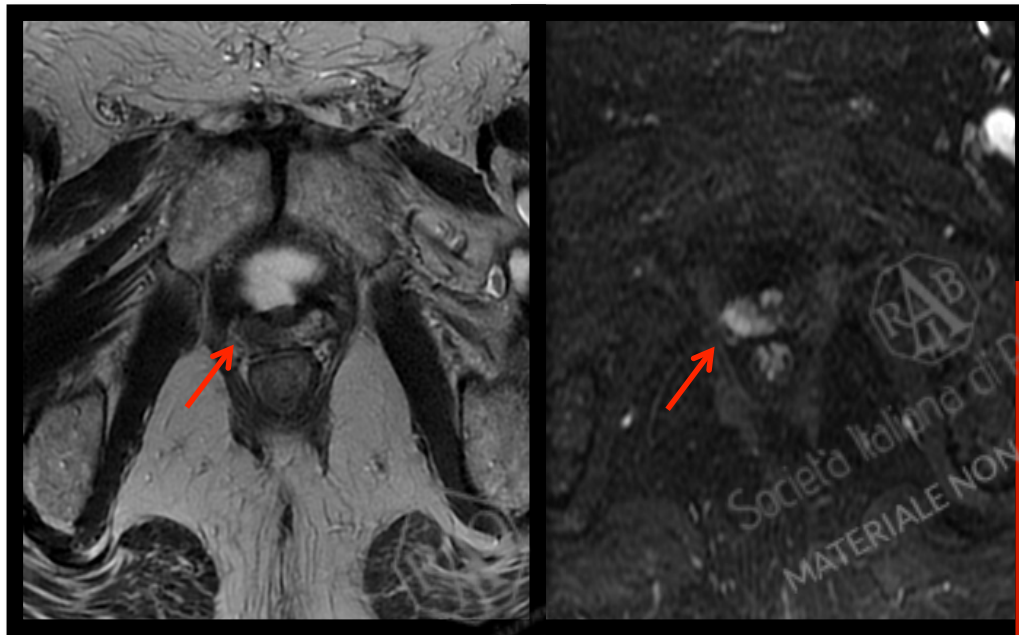
- Dose prescription was 73.5 Gy (EQD2Gy of 82.95 Gy considering α/β value for prostate cancer) in SIB to the recurrence and 69 Gy (EQD2Gy range 69.77-74.91) to the prostatic bed.
- 29 pts (60%) were also simultaneously irradiated on the pelvic nodes (EQD2Gy range 50.91-69.77 Gy).
- 16 patients were underwent ADT during SRT.
- CTCAE v. 4 criteria were used to respectively evaluate acute and late toxicity.



Società Italiana di Radiobiologia
MATERIALE NON RIPRODUCIBILE

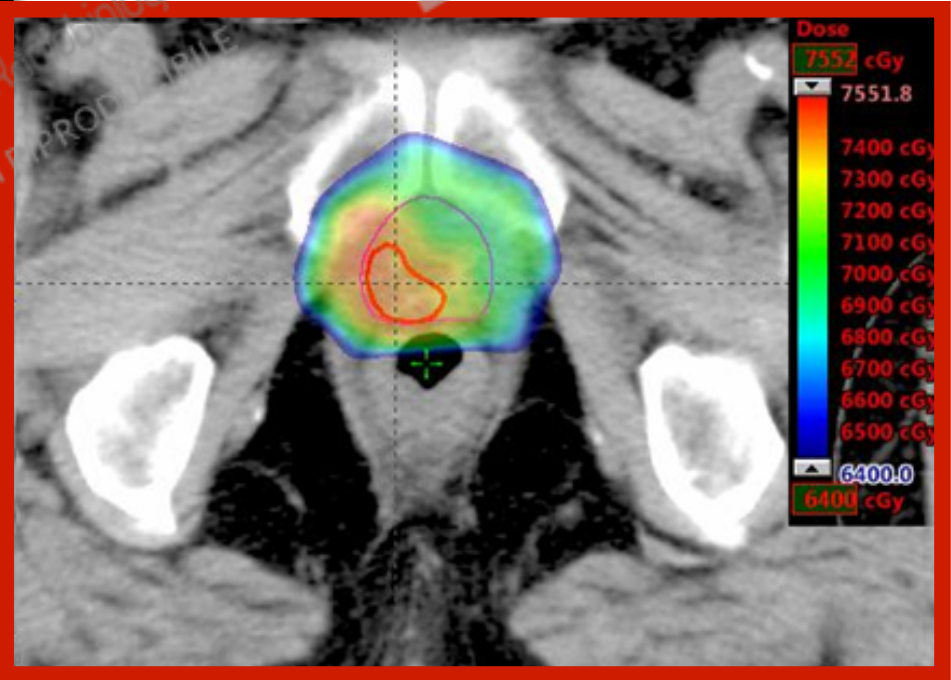


Definition of LR by mpMRI and moderately hypofractionated SRT with concomitant boost



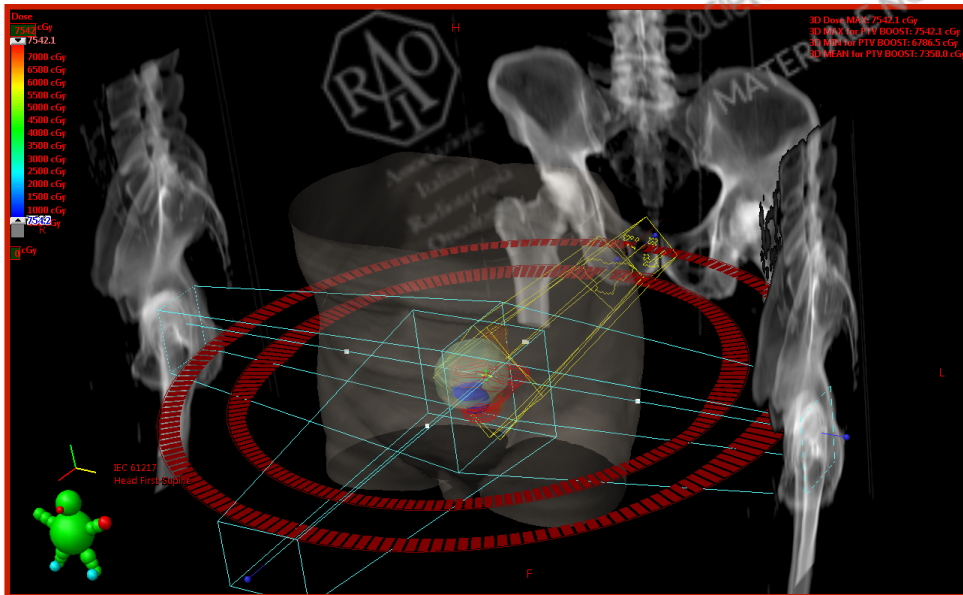
Ax T2

DCE



Conclusions

- Preliminary results show that moderately hypofractionated IMRT/VMAT SRT for a local recurrence is well tolerated with acceptable acute and late toxicity rates.
- A longer follow up is required to confirm the late toxicity profile and assess disease control.



VMAT SRT



Associazione
Italiana
Radioterapia
Oncologica



Società Italiana di Radiobiologia



Farmaci innovativi e ipofrazionamento

PALACONGRESSI DI RIMINI
30 settembre, 1-2 ottobre 2016

XXVI CONGRESSO NAZIONALE AIRO
Presidente: Elvio G. Russi

XXX CONGRESSO NAZIONALE AIRB
Presidente: Renzo Corvò

IX CONGRESSO NAZIONALE AIRO GIOVANI
Coordinatore: Daniela Greto

Grazie per l'attenzione