



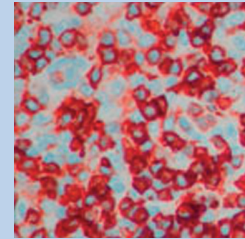
ISTITUTO DI EMATOLOGIA  
"L. A. SERAGNOLI"



ALMA MATER STUDIORUM  
UNIVERSITÀ DI BOLOGNA  
DIPARTIMENTO DI MEDICINA ONCOLOGICA  
EMATOLOGICA E SPERIMENTALE

SERVIIZIO SANITARIO REGIONALE  
EMILIA-ROMAGNA  
Azienda Ospedaliera - Università di Bologna  
Policlinico S. Orsola-Malpighi

# 2015... 2018 T-Cell Lymphomas: we are close to the finalization



PROGRAM

Bologna  
ROYAL HOTEL CARLTON  
**May 7-9, 2018**

President: **Pier Luigi Zinzani**  
Co-President: **Michele Cavo**  
Honorary President: **Sante Tura**

## Auspices

**ALMA MATER STUDIORUM  
UNIVERSITÀ DEGLI STUDI DI BOLOGNA**

**REGIONE EMILIA-ROMAGNA**

**AZIENDA OSPEDALIERO-UNIVERSITARIA  
DI BOLOGNA**

**AIL ASSOCIAZIONE ITALIANA CONTRO  
LE LEUCEMIE - LINFOMI E MIELOMA**  
SEZIONE DI BOLOGNA

**SIE - SOCIETÀ ITALIANA DI EMATOLOGIA**

### Scientific Secretariat

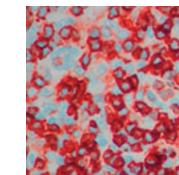
Pier Luigi Zinzani  
Istituto di Ematologia  
"Lorenzo e Ariosto Seràgnoli"  
Via Massarenti, 9 - 40138 Bologna, Italy  
Phone +39 051 6363680  
Fax +39 051 6364037  
E-mail: pierluigi.zinzani@unibo.it

### Organizing Secretariat

Studio E.R. Congressi  
Via Marconi, 36 - 40122 Bologna, Italy  
Phone +39 051 4210559  
Fax +39 051 4210174  
E-mail: ercongressi@ercongressi.it  
www.ercongressi.it

## Faculty

Ranjana	<b>Advani</b>	Stanford, USA	<b>Stefano A.</b>	<b>Pileri</b>	Milan, Italy
Martine	<b>Bagot</b>	Paris, France	<b>Nicola</b>	<b>Pimpinelli</b>	Florence, Italy
Emilio	<b>Berti</b>	Milan, Italy	<b>Antonello</b>	<b>Pinto</b>	Naples, Italy
Lorenzo	<b>Cerroni</b>	Graz, Austria	<b>Miguel A.</b>	<b>Piris</b>	Madrid, Spain
Bruce D.	<b>Cheson</b>	Washington, USA	<b>H. Miles</b>	<b>Prince</b>	Melbourne, Australia
Paolo	<b>Corradini</b>	Milan, Italy	<b>Barbara</b>	<b>Pro</b>	Chicago, USA
Francesco A.	<b>D'Amore</b>	Aarhus, Denmark	<b>Martin</b>	<b>Pule</b>	London, United Kingdom
Laurence	<b>de Leval</b>	Lausanne, Switzerland	<b>Pietro</b>	<b>Quaglino</b>	Turin, Italy
Richard	<b>Delarue</b>	Paris, France	<b>Elena</b>	<b>Sabattini</b>	Bologna, Italy
Madeleine	<b>Duvic</b>	Houston, USA	<b>Marco</b>	<b>Santucci</b>	Florence, Italy
Brunangelo	<b>Falini</b>	Perugia, Italy	<b>Julia</b>	<b>Scarisbrick</b>	Birmingham, United Kingdom
Michelle	<b>Fanale</b>	Houston, USA	<b>Andrei R.</b>	<b>Shustov</b>	Seattle, USA
Francine	<b>Foss</b>	New Haven, USA	<b>Kunihiro</b>	<b>Tsukasaki</b>	Saitama, Japan
Philippe	<b>Gaulard</b>	Créteil, France	<b>David M.</b>	<b>Weinstock</b>	Boston, USA
Joan	<b>Guitart</b>	Chicago, USA	<b>Sean</b>	<b>Whittaker</b>	London, United Kingdom
Steven M.	<b>Horwitz</b>	New York, USA	<b>Motoko</b>	<b>Yamaguchi</b>	Tsu, Japan
Hui-Qiang	<b>Huang</b>	Guangzhou, China	<b>Pier Luigi</b>	<b>Zinzani</b>	Bologna, Italy
Javeed	<b>Iqbal</b>	Omaha, USA	<b>Emanuele</b>	<b>Zucca</b>	Bellinzona, Switzerland
Takashi	<b>Ishida</b>	Nagoya, Japan			
Arnaud	<b>Jaccard</b>	Limoges, France			
Elaine S.	<b>Jaffe</b>	Bethesda, USA			
Youn H.	<b>Kim</b>	Stanford, USA			
Won Seog	<b>Kim</b>	Seoul, Korea			
Yok Lam	<b>Kwong</b>	Hong Kong, China			
Megan S.	<b>Lim</b>	Philadelphia, USA			
Owen A.	<b>O'Connor</b>	New York, USA			
Michinori	<b>Ogura</b>	Kakamigahara, Japan			
Francesco	<b>Onida</b>	Milan, Italy			
Teresa	<b>Palomero</b>	New York, USA			
Marco	<b>Paulli</b>	Pavia, Italy			



2015... 2018  
T-Cell Lymphomas:  
we are close to the  
finalization

Monday, May 7, 2018

2

2.30 p.m. *Welcome and Introduction*

**A pathobiology window in the “T-cell world”**

*Chairmen: E.S. Jaffe, S.A. Pileri*

2.45 p.m. *News from WHO - E.S. Jaffe*

3.05 p.m. *Functional proteogenomics reveals biomarkers and therapeutic targets in lymphoid cancer - M.S. Lim*

3.25 p.m. *Defining vulnerabilities of PTCL - D.M. Weinstock*

3.45 p.m. *Molecular profiling to improve classification of T-cell lymphoma - L. de Leval*

4.05 p.m. *Experimental models - M.A. Piris*

**Standard treatment in front-line and prognostic index**

*Chairmen: P. Corradini, S.M. Horwitz*

**How I treat:**

4.25 p.m. *PTCL - F.A. D’Amore*

4.45 p.m. *CTCL - Y.H. Kim*

5.05 p.m. *ATLL - T. Ishida*

5.25 p.m. *NK/T-cell lymphoma - W.S. Kim*

5.45 p.m. *New potential alternatives in PTCL front-line - R. Advani*

6.05 p.m. *PET: to be or not to be? - B.D. Cheson*

6.25 p.m. *Prognostic models in PTCL - F. Foss*

Tuesday, May 8, 2018

3

**PTCL: morphology and pathobiology**

*Chairmen: B. Falini, M. Paulli*

**PTCL-nos:**

8.30 a.m. *Histology - E. Sabbatini*

8.50 a.m. *Molecular genotyping - T. Palomero*

9.10 a.m. *Gene expression profiling - J. Iqbal*

9.30 a.m. *Angioimmunoblastic T-cell lymphoma and other nodal lymphomas of T follicular helper cell origin - P. Gaulard*

9.50 a.m. *ALCL - S.A. Pileri*

10.10 a.m. **Coffee Break**

**The “CD30+ world”**

*Chairman: P.L. Zinzani*

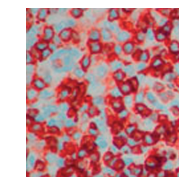
10.25 a.m. *CD30 expression: is it a Rubik’s cube? - S.A. Pileri*

**Brentuximab vedotin in:**

10.45 a.m. *ALCL - B. Pro*

11.05 a.m. *PTCL-nos/AILT - M. Fanale*

11.25 a.m. *CTCL - H.M. Prince*



2015... 2018  
T-Cell Lymphomas:  
we are close to the  
finalization

## NK/T-cell lymphoma: SMILE and other “asparaginase” containing regimens

Chairmen: *R. Advani, W.S. Kim*

### Experience in:

- 11.45 a.m. Japan - *M. Yamaguchi*
- 12.00 p.m. Hong Kong - *Y.L. Kwong*
- 12.15 p.m. France - *A. Jaccard*
- 12.30 p.m. China - *H. Huang*
- 12.45 p.m. Korea - *W.S. Kim*

1.00 p.m. *Lunch*

### PTCL: update on...

Chairman: *B.D. Cheson*

- 2.30 p.m. Romidepsin - *A.R. Shustov*
- 2.45 p.m. Belinostat - *F. Foss*
- 3.00 p.m. Lenalidomide - *S.M. Horwitz*

### Lectures

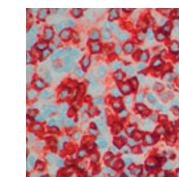
Chairman: *A. Pinto*

- 3.20 p.m. Novel combination strategies: a new path forward - *O.A. O'Connor*
- 3.45 p.m. News on breast implant ALCL - *H.M. Prince*

## PTCL: the new single agents

Chairmen: *M. Ogura, E. Zucca*

- 4.15 p.m. Aplidin - *B. Pro*
- 4.30 p.m. Pembrolizumab - *Y.L. Kwong*
- 4.45 p.m. Copanlisib - *P.L. Zinzani*
- 5.00 p.m. Duvelisib - *S.M. Horwitz*
- 5.15 p.m. 5-azacytidine - *R. Delarue*
- 5.30 p.m. EDO-S101 - *O.A. O'Connor*
- 5.45 p.m. Forodesine - *K. Tsukasaki*
- 6.00 p.m. CAR T-cell - *M. Pule*



2015... 2018  
T-Cell Lymphomas:  
we are close to the  
finalization

**CTCL: morphology, pathobiology and prognostic models**

Chairmen: *E. Berti, S.A. Pileri*

- 8.30 a.m. Histology - *M. Santucci*
- 8.45 a.m. Gene expression profiling - *S. Whittaker*
- 9.00 a.m. The spectrum of CD8+ CTCL - *J. Guitart*
- 9.15 a.m. Unusual clinicopathologic variants of CTCL - *L. Cerroni*
- 9.30 a.m. Prognostic models - *J. Scarisbrick*

**CTCL: conventional and emerging drugs**

Chairmen: *N. Pimpinelli, P. Quaglino*

- 9.45 a.m. Histone deacetylase inhibitors - *J. Scarisbrick*
- 10.00 a.m. IPH4102 anti-KIR3DL2 mAb - *M. Bagot*
- 10.15 a.m. Tenalisib - *M. Duvic*
- 10.30 a.m. Pembrolizumab - *Y.H. Kim*
- 10.45 a.m. ARGX110 - *M. Bagot*
- 11.00 a.m. TTI-621 - *O.A. O'Connor*
- 11.15 a.m. E7777 - *M. Duvic*

**Mogamulizumab: a pan-T cell lymphoma drug**

Chairman: *S.M. Horwitz*

- 11.30 a.m. ATLL - *K. Tsukasaki*
- 11.45 a.m. PTCL - *M. Ogura*
- 12.00 p.m. CTCL - *M. Duvic*

**Allotransplant setting**

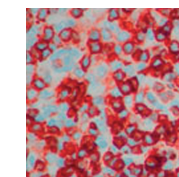
Chairman: *F. Onida*

**PTCL, perspective from:**

- 12.15 p.m. North America - *A.R. Shustov*
- 12.30 p.m. Europe - *P. Corradini*

**CTCL, perspective from:**

- 12.45 p.m. Europe - *M. Bagot*
- 1.00 p.m. North America - *M. Duvic*
  
- 1.15 p.m. Arrivederci at 2021!



2015... 2018  
T-Cell Lymphomas:  
we are close to the  
finalization

## GENERAL INFORMATION

### MEETING VENUE

#### Royal Hotel Carlton

Via Montebello, 8 - 40121 Bologna, Italy  
Phone +39 051 249361 - Fax +39 051 249724  
www.royalhotelcarltonbologna.com

### OFFICIAL LANGUAGE

English

### REGISTRATION FEE

Euro 400,00 (Italian VAT included)

*The registration fee includes:* conference kit, participation in the scientific sessions, attendance certificate, coffee breaks, lunches, slides of the meeting.

### BADGE

All registered participants, speakers and sponsors will be given a badge which they must wear to be admitted to the scientific sessions.

### ATTENDANCE CERTIFICATE

A certificate will be given to all participants at the end of the meeting.

### ITALIAN CME CREDITS

A request for Italian CME credits has been made as follows:

- Provider Studio ER Congressi SRL: ID 828-213620.
- No. 11,9 CME credits for physicians (disciplines: Allergology and Clinical Immunology, Dermatology and Venereology, Hematology, Oncology, Pathological Anatomy, Clinical Biochemistry, Clinical Pathology), biologists and chemists
- Educational objective: "guidelines-protocols-procedures"

### EUROPEAN CME CREDITS

The program of the "T-cell lymphomas: we are close to the finalization" has been reviewed and approved for CME accreditation by the European Board for Accreditation in Hematology (EBAH), an independent accreditation body endorsed by EHA.

The EBAH Unit has approved this educational activity for no. 17 CME credits for physicians biologists and chemists. To request credits, please fill out the form and return it to the registration desk at the end of the meeting.

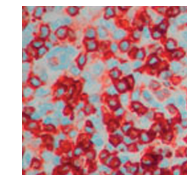
We remind you that it is necessary to have an EBAH-CME account in order to claim for credits. Attendees can create an EBAH-CME account registering on the website: <http://ebah.org> even on site.

### CHANGES

Parts of the program may be changed without notice.

8

9



2015... 2018  
T-Cell Lymphomas:  
we are close to the  
finalization

### **Scientific Secretariat**

Pier Luigi Zinzani  
Istituto di Ematologia  
"Lorenzo e Ariosto Seràgnoli"  
Via Massarenti, 9 - 40138 Bologna, Italy  
Phone +39 051 6363680  
Fax +39 051 6364037  
E-mail: [pierluigi.zinzani@unibo.it](mailto:pierluigi.zinzani@unibo.it)

### **Organizing Secretariat**

Studio E.R. Congressi  
Via Marconi, 36 - 40122 Bologna, Italy  
Phone +39 051 4210559  
Fax +39 051 4210174  
E-mail: [ercongressi@ercongressi.it](mailto:ercongressi@ercongressi.it)  
[www.ercongressi.it](http://www.ercongressi.it)