



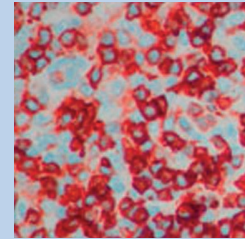
ISTITUTO DI EMATOLOGIA
"L. A. SERAGNOLI"



ALMA MATER STUDIORUM
UNIVERSITÀ DI BOLOGNA
DIPARTIMENTO DI MEDICINA ONCOLOGICA,
DIAGNOSTICA E SPERIMENTALE

SERVIIZIO SANITARIO REGIONALE
EMILIA-ROMAGNA
Azienda Ospedaliera - Università di Bologna
Policlinico S. Orsola-Malpighi

2015... 2018 T-Cell Lymphomas: we are close to the finalization



PROGRAM

Bologna
ROYAL HOTEL CARLTON
May 7-9, 2018

President: **Pier Luigi Zinzani**
Co-President: **Michele Cavo**
Honorary President: **Sante Tura**

Auspices

**ALMA MATER STUDIORUM
UNIVERSITÀ DEGLI STUDI DI BOLOGNA**

REGIONE EMILIA-ROMAGNA

**AZIENDA OSPEDALIERO-UNIVERSITARIA
DI BOLOGNA**

**AIL ASSOCIAZIONE ITALIANA CONTRO
LE LEUCEMIE - LINFOMI E MIELOMA**
SEZIONE DI BOLOGNA

SIE - SOCIETÀ ITALIANA DI EMATOLOGIA

Scientific Secretariat

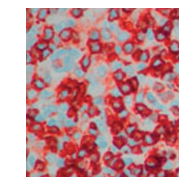
Pier Luigi Zinzani
Istituto di Ematologia
"Lorenzo e Ariosto Seràgnoli"
Via Massarenti, 9 - 40138 Bologna, Italy
Phone +39 051 6363680
Fax +39 051 6364037
E-mail: pierluigi.zinzani@unibo.it

Organizing Secretariat

Studio E.R. Congressi
Via Marconi, 36 - 40122 Bologna, Italy
Phone +39 051 4210559
Fax +39 051 4210174
E-mail: ercongressi@ercongressi.it
www.ercongressi.it

Faculty

Ranjana	Advani	Stanford, USA	Antonello	Pinto	Naples, Italy
Martine	Bagot	Paris, France	Miguel A.	Piris	Madrid, Spain
Emilio	Berti	Milan, Italy	H. Miles	Prince	Melbourne, Australia
Lorenzo	Cerroni	Graz, Austria	Barbara	Pro	Chicago, USA
Bruce D.	Cheson	Washington, USA	Martin	Pule	London, United Kingdom
Paolo	Corradini	Milan, Italy	Pietro	Quaglino	Turin, Italy
Francesco A.	D'Amore	Aarhus, Denmark	Christiane	Querfeld	Duarte, USA
Laurence	de Leval	Lausanne, Switzerland	Elena	Sabattini	Bologna, Italy
Richard	Delarue	Paris, France	Marco	Santucci	Florence, Italy
Madeleine	Duvic	Houston, USA	Julia	Scarisbrick	Birmingham, United Kingdom
Brunangelo	Falini	Perugia, Italy	Andrei R.	Shustov	Seattle, USA
Francine	Foss	New Haven, USA	Kunihiro	Tsukasaki	Saitama, Japan
Philippe	Gaulard	Créteil, France	David M.	Weinstock	Boston, USA
Joan	Guitart	Chicago, USA	Sean	Whittaker	London, United Kingdom
Steven M.	Horwitz	New York, USA	Motoko	Yamaguchi	Tsu, Japan
Hui-Qiang	Huang	Guangzhou, China	Pier Luigi	Zinzani	Bologna, Italy
Javeed	Iqbal	Omaha, USA	Emanuele	Zucca	Bellinzona, Switzerland
Arnaud	Jaccard	Limoges, France			
Elaine S.	Jaffe	Bethesda, USA			
Youn H.	Kim	Stanford, USA			
Won Seog	Kim	Seoul, Korea			
Yok Lam	Kwong	Hong Kong, China			
Megan S.	Lim	Philadelphia, USA			
Owen A.	O'Connor	New York, USA			
Michinori	Ogura	Kasugai City, Japan			
Francesco	Onida	Milan, Italy			
Teresa	Palomero	New York, USA			
Marco	Paulli	Pavia, Italy			
Stefano A.	Pileri	Milan, Italy			
Nicola	Pimpinelli	Florence, Italy			



2015... 2018
T-Cell Lymphomas:
we are close to the
finalization

Monday, May 7, 2018

2

2.30 p.m. *Welcome and Introduction*

A pathobiology window in the “T-cell world”

Chairmen: E.S. Jaffe, S.A. Pileri

2.45 p.m. *News from WHO - E.S. Jaffe*

3.05 p.m. *Functional proteogenomics reveals biomarkers and therapeutic targets in lymphoid cancer - M.S. Lim*

3.25 p.m. *Defining vulnerabilities of PTCL - D.M. Weinstock*

3.45 p.m. *Molecular profiling to improve classification of T-cell lymphoma - L. de Leval*

4.05 p.m. *Experimental models - M.A. Piris*

Standard treatment in front-line and prognostic index

Chairmen: F. Foss, S.M. Horwitz

How I treat:

4.25 p.m. *PTCL - F.A. D’Amore*

4.45 p.m. *CTCL - Y.H. Kim*

5.05 p.m. *ATLL - Y.L. Kwong*

5.25 p.m. *NK/T-cell lymphoma - W.S. Kim*

5.45 p.m. *New potential alternatives in PTCL front-line - R. Advani*

6.05 p.m. *PET: to be or not to be? - B.D. Cheson*

6.25 p.m. *Prognostic models in PTCL - F. Foss*

Tuesday, May 8, 2018

3

PTCL: morphology and pathobiology

Chairmen: B. Falini, M. Paulli

PTCL-nos:

8.30 a.m. *Histology - E. Sabbatini*

8.50 a.m. *Molecular genotyping - T. Palomero*

9.10 a.m. *Gene expression profiling - J. Iqbal*

9.30 a.m. *Angioimmunoblastic T-cell lymphoma and other nodal lymphomas of T follicular helper cell origin - P. Gaulard*

9.50 a.m. *ALCL - S.A. Pileri*

10.10 a.m. **Coffee Break**

The “CD30+ world”

Chairman: P.L. Zinzani

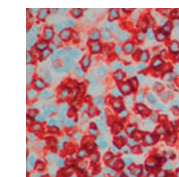
10.25 a.m. *CD30 expression: is it a Rubik’s cube? - S.A. Pileri*

Brentuximab vedotin in:

10.45 a.m. *ALCL - B. Pro*

11.05 a.m. *PTCL-nos/AILT - S.M. Horwitz*

11.25 a.m. *CTCL - H.M. Prince*



2015... 2018
T-Cell Lymphomas:
we are close to the
finalization

NK/T-cell lymphoma: SMILE and other “asparaginase” containing regimens

Chairmen: R. Advani, W.S. Kim

Experience in:

- 11.45 a.m. Japan - *M. Yamaguchi*
- 12.00 p.m. Hong Kong - *Y.L. Kwong*
- 12.15 p.m. France - *A. Jaccard*
- 12.30 p.m. China - *H. Huang*
- 12.45 p.m. Korea - *W.S. Kim*

1.00 p.m. *Lunch*

PTCL: update on...

Chairman: *B.D. Cheson*

- 2.30 p.m. Romidepsin - *A.R. Shustov*
- 2.45 p.m. Belinostat - *F. Foss*
- 3.00 p.m. Lenalidomide - *S.M. Horwitz*

Lectures

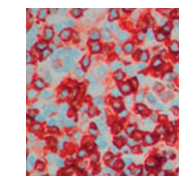
Chairman: *A. Pinto*

- 3.20 p.m. Novel combination strategies: a new path forward - *O.A. O'Connor*
- 3.45 p.m. News on breast implant ALCL - *H.M. Prince*

PTCL: the new single agents

Chairmen: *M. Ogura, E. Zucca*

- 4.15 p.m. Aplidin - *B. Pro*
- 4.30 p.m. Pembrolizumab - *Y.L. Kwong*
- 4.45 p.m. Copanlisib - *P.L. Zinzani*
- 5.00 p.m. Duvelisib - *S.M. Horwitz*
- 5.15 p.m. 5-azacytidine - *R. Delarue*
- 5.30 p.m. EDO-S101 - *O.A. O'Connor*
- 5.45 p.m. Forodesine - *K. Tsukasaki*
- 6.00 p.m. CAR T-cell - *M. Pule*



2015... 2018
T-Cell Lymphomas:
we are close to the
finalization

CTCL: morphology, pathobiology and prognostic models

Chairmen: *E. Berti, S.A. Pileri*

- 8.30 a.m. Histology - *M. Santucci*
- 8.45 a.m. Gene expression profiling - *S. Whittaker*
- 9.00 a.m. The spectrum of CD8+ CTCL - *J. Guitart*
- 9.15 a.m. Unusual clinicopathologic variants of CTCL - *L. Cerroni*
- 9.30 a.m. Prognostic models - *J. Scarisbrick*

CTCL: conventional and emerging drugs

Chairmen: *N. Pimpinelli, P. Quaglino*

- 9.45 a.m. Histone deacetylase inhibitors - *J. Scarisbrick*
- 10.00 a.m. IPH4102 anti-KIR3DL2 mAb - *M. Bagot*
- 10.15 a.m. Tenalisib - *M. Duvic*
- 10.30 a.m. Pembrolizumab - *Y.H. Kim*
- 10.45 a.m. ARGX110 - *M. Bagot*
- 11.00 a.m. TTI-621 - *O.A. O'Connor*
- 11.15 a.m. E7777 - *M. Duvic*
- 11.30 a.m. MRG-106 - *C. Querfeld*

Mogamulizumab: a pan-T cell lymphoma drug

Chairman: *S.M. Horwitz*

- 11.45 a.m. ATLL - *K. Tsukasaki*
- 12.00 p.m. PTCL - *M. Ogura*
- 12.15 p.m. CTCL - *M. Duvic*

Allotransplant setting

Chairman: *F. Onida*

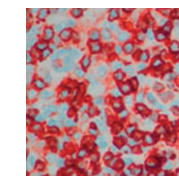
PTCL, perspective from:

- 12.30 p.m. North America - *A.R. Shustov*
- 12.45 p.m. Europe - *P. Corradini*

CTCL, perspective from:

- 1.00 p.m. Europe - *M. Bagot*
- 1.15 p.m. North America - *M. Duvic*

- 1.30 p.m. Arrivederci at 2021!



2015... 2018
T-Cell Lymphomas:
we are close to the
finalization

GENERAL INFORMATION

MEETING VENUE

Royal Hotel Carlton

Via Montebello, 8 - 40121 Bologna, Italy
Phone +39 051 249361 - Fax +39 051 249724
www.royalhotelcarltonbologna.com

OFFICIAL LANGUAGE

English

REGISTRATION FEE

Euro 400,00 (Italian VAT included)

The registration fee includes: conference kit, participation in the scientific sessions, attendance certificate, coffee breaks, lunches, slides of the meeting.

BADGE

All registered participants, speakers and sponsors will be given a badge which they must wear to be admitted to the scientific sessions.

ATTENDANCE CERTIFICATE

A certificate will be given to all participants at the end of the meeting.

ITALIAN CME CREDITS

A request for Italian CME credits has been made as follows:

- Provider Studio ER Congressi SRL: ID 828-213620.
- No. 11,9 CME credits for physicians (disciplines: Allergology and Clinical Immunology, Dermatology and Venereology, Hematology, Oncology, Pathological Anatomy, Clinical Biochemistry, Clinical Pathology), biologists and chemists
- Educational objective: "guidelines-protocols-procedures"

EUROPEAN CME CREDITS

The program of the "T-cell lymphomas: we are close to the finalization" has been reviewed and approved for CME accreditation by the European Board for Accreditation in Hematology (EBAH), an independent accreditation body endorsed by EHA.

The EBAH Unit has approved this educational activity for no. 17 CME credits for physicians biologists and chemists. To request credits, please fill out the form and return it to the registration desk at the end of the meeting.

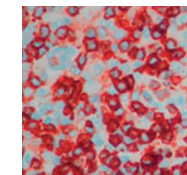
We remind you that it is necessary to have an EBAH-CME account in order to claim for credits. Attendees can create an EBAH-CME account registering on the website: <http://ebah.org> even on site.

CHANGES

Parts of the program may be changed without notice.

8

9



2015... 2018
T-Cell Lymphomas:
we are close to the
finalization

Scientific Secretariat

Pier Luigi Zinzani
Istituto di Ematologia
"Lorenzo e Ariosto Seràgnoli"
Via Massarenti, 9 - 40138 Bologna, Italy
Phone +39 051 6363680
Fax +39 051 6364037
E-mail: pierluigi.zinzani@unibo.it

Organizing Secretariat

Studio E.R. Congressi
Via Marconi, 36 - 40122 Bologna, Italy
Phone +39 051 4210559
Fax +39 051 4210174
E-mail: ercongressi@ercongressi.it
www.ercongressi.it