

# Faculty

Kari	Alitalo	<i>Helsinki - F</i>
Anna	Bagnato	<i>Roma</i>
Francesco	Bertolini	<i>Milano</i>
Federico	Bussolino	<i>Candiolo (TO)</i>
Yihai	Cao	<i>Stockholm - S</i>
Andrea	Casazza	<i>Leuven - B</i>
Stefano	Cascinu	<i>Ancona</i>
Maurizio	D'Incalci	<i>Milano</i>
Ruggero	De Maria	<i>Roma</i>
Giampietro	Gasparini	<i>Roma</i>
Raffaella	Giavazzi	<i>Milano</i>
Fiorella	Guadagni	<i>Roma</i>
Stefano	Indraccolo	<i>Padova</i>
Antonio	Marchetti	<i>Chieti</i>
Paolo	Marchetti	<i>Roma</i>
Alessandro	Morabito	<i>Napoli</i>
Camillo	Porta	<i>Pavia</i>
Giovanni	Scambia	<i>Roma</i>
Stefan	Scherer	<i>Basel - CH</i>
Giuseppe	Toffoli	<i>Aviano (PN)</i>
Masakazu	Toi	<i>Kyoto - J</i>
Giuseppe	Tonini	<i>Roma</i>
Giampaolo	Tortora	<i>Verona</i>

## MEETING VENUE

NH Hotel Vittorio Veneto  
Corso Italia, 1 - 00198 Roma  
Ph. +39 06.84951

## ITALIAN CME CREDITS

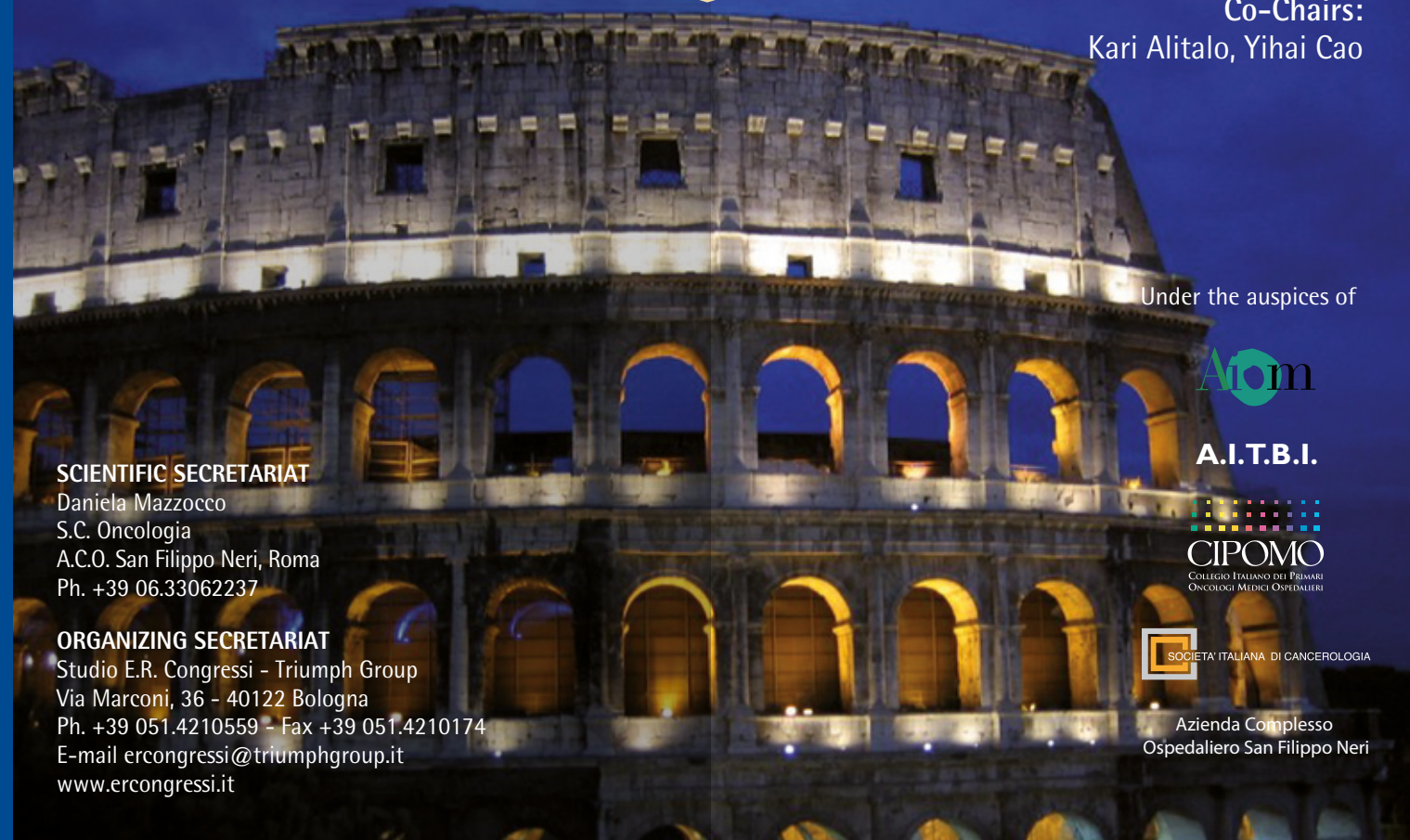
No. 7 Italian Ministry of Health CME (Continuing Medical Education) credits have been assigned to Biologists, Chemists and Physician, specialized in: Oncology and Anatomopathology.

# V INTERNATIONAL CONFERENCE IN MEMORY OF JUDAH FOLKMAN *TRANSLATIONAL STUDIES ON ANGIOGENESIS*

**Rome, January 19, 2013**  
NH Hotel Vittorio Veneto

**President:**  
Giampietro Gasparini

**Co-Chairs:**  
Kari Alitalo, Yihai Cao



Under the auspices of



**A.I.T.B.I.**



Azienda Complesso  
Ospedaliero San Filippo Neri

## SCIENTIFIC SECRETARIAT

Daniela Mazzocco  
S.C. Oncologia  
A.C.O. San Filippo Neri, Roma  
Ph. +39 06.33062237

## ORGANIZING SECRETARIAT

Studio E.R. Congressi - Triumph Group  
Via Marconi, 36 - 40122 Bologna  
Ph. +39 051.4210559 - Fax +39 051.4210174  
E-mail [ercongressi@triumphgroup.it](mailto:ercongressi@triumphgroup.it)  
[www.ercongressi.it](http://www.ercongressi.it)

9.20 a.m.

Introduction  
*G. Gasparini*

9.30 – 10.00 a.m.

LECTURE: Remembering Judah Folkman  
Emerging concepts on tumor angiogenesis  
*K. Alitalo*

## SESSION I – PREDICTIVE FACTORS

*Chairman: R. De Maria*

10.00 – 10.20 a.m.

LECTURE: New approaches to predict efficacy of bevacizumab  
*S. Scherer*

10.20 – 10.40 a.m.

The role of circulating tumors and endothelial cells  
*F. Bertolini*

10.40 – 11.00 a.m.

Hypoxia-related biomarkers  
*A. Marchetti*

11.00 – 11.20 a.m.

Tumor cell metabolism  
*S. Indraccolo*

11.20 – 11.40 a.m.

Which tools to select the patients for antiangiogenic therapy?  
*G. Tortora*

11.40 a.m. – 12.00 p.m.

LECTURE: The model of breast cancer  
*M. Toi*

12.00 – 12.15 p.m.

Discussion

ROUND TABLE:

NEW ACQUISITIONS FROM EXPERIMENTAL STUDIES

12.15 – 1.00 p.m.

*Chairman: F. Bussolino*

Discussants: *F. Guadagni, A. Bagnato, R. Giavazzi, M. D'Incalci*

1.15 – 2.00 p.m.

Lunch

## SESSION II – CLINICAL PHARMACOLOGY APPLIED TO ANGIOGENESIS

*Chairman: M. D'Incalci*

2.00 – 2.20 p.m.

LECTURE: Novel preclinical models for development of antiangiogenic agents  
*R. Giavazzi*

2.20 – 2.40 p.m.

Interaction of antiangiogenic agents with cytotoxic drugs  
*G. Toffoli*

2.40 – 3.00 p.m.

Pharmacogenetics studies  
*P. Marchetti*

3.00 – 3.20 p.m.

Circulating VEGF and response to therapy  
*G. Tonini*

3.20 – 3.45 p.m.

LECTURE: Innovative therapeutic strategies  
*A. Casazza*

3.45 – 4.00 p.m.

Discussion

## SESSION III – TRANSLATIONAL STUDIES BY TUMOR TYPE

*Chairman: G. Gasparini*

4.00 – 4.20 p.m.

Update of translational research studies on Angiogenesis  
*Y. Cao*

4.20 – 4.40 p.m.

The model of renal cancer  
*C. Porta*

4.40 – 5.00 p.m.

The model of gastrointestinal tumors  
*S. Cascinu*

5.00 – 5.20 p.m.

The model of NSCLC  
*A. Morabito*

5.20 – 5.40 p.m.

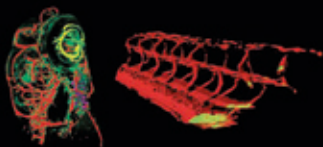
The model of ovarian cancer  
*G. Scambia*

5.40 – 5.50 p.m.

Discussion

5.50 p.m.

Conclusions  
*G. Gasparini*



Judah Folkman